



Nestled on 40 acres of beautiful bushland at Boyles Road in Kuranda, **Candlenut Steiner School** offers a unique educational experience, from Kindy to Class Ten, to families in Cairns, Kuranda and the Tablelands.

Limited places are now available in classes Kinder to Class 10

Come and visit our weekly markets each Thursday from 2.30pm. Fresh produce, dips and healthy treats available. For further information, or an enrolment package: please visit our website at www.candlenutsteinerschool.qld.edu.au or contact the office on **4093 8809** between 8.00am & 4.00pm

Kuranda Electrics

• **Domestic & Commercial** •

Todd Newman Ph: 0447 722 576
Lic No. 70307

Servicing Kuranda – Speewah – Koah – Cairns

LOCAL ELECTRICIAN

SPECIAL LOCAL RATES

10 YEARS EXPERIENCE

Experienced in

Renovations • New Installations
Bore Pumps • 3 Phase Gear
Generator Changeover • Hot Water Systems
Phone Licensed • Ovens

NO JOB TOO SMALL



Caring for Kuranda's Environment

“by standing on the shoulders of those who've gone before”

Nursery: 284 Myola Rd, Mon & Thu 9am-1pm, Sat 10-noon, ph: 4093 8989 / 4093 8393

SCRUB STREET PLANTING

In late April a motivated team of volunteers showed up at the end of Scrub Street and planted, mulched and watered 400 trees in less than 2 hours. This planting increases the forest diversity on one of the arms of Warril creek, improving habitat for the endangered Myola frog. This is now the 4th site planted with funding from the GROW project donors.



Residents Donna and Pat giving a helping hand.

PLANT ID COURSE A HIT

Terrain NRM gave us the opportunity to have Bruce Wannan, one of our local botanists, present a Tropical Rainforest Plant Identification Course at the Community Precinct building in early May. We learnt how to identify the different characteristics of a plant. Location, leaf type, fruits and flower types were among some of these choices we had to key out our specimens. The Tropical Rainforest Plant Identification key is accessible on the internet and is a great tool for anyone in doubt. A great day was had by all and our brains were a little fuzzy by the end of the day. To go to the rainforest key, use <http://www.anbg.gov.au/cpbr/cd-keys/rfk/>



Everybody say TREES!

FREE DUMPING & RECYCLING IN KURANDA

The **Kuranda transfer station** takes glass, plastics, paper and aluminium cans so you can take them there to be recycled instead of mixing them in with general waste. Car batteries can also be taken to the dump but smaller batteries can be recycled at the **Kuranda District College**. There is a large box at the front office for you to put your batteries in for recycling.

Why recycle batteries?



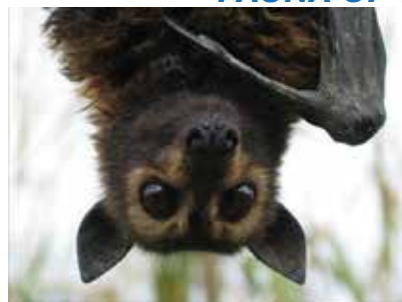
Reuse valuable minerals

By recycling, valuable minerals can be recovered that can otherwise act

as pollutants. These include mercury (from button cell batteries), zinc, manganese dioxide and silver (from single-use batteries), lead, sulfuric acid, & plastic (from car batteries), and nickel-cadmium, cadmium, nickel-metal hydride and lithium-ion (from rechargeable batteries). Lead acid batteries are 96% recyclable, and cadmium can be returned to battery manufacturers to create a fully closed loop recycling system. **Keep toxins out of the soil and water.**

Most batteries contain toxic but valuable metals (such as those listed above), that can, when sent to landfill, harm the environment by contaminating soil and groundwater

FAUNA OF THE MONTH – BATS



Bats are a very important part of our local biodiversity. They are of great help with seed dispersal and pollination of flowers. Spectacled Flying Foxes are one of our local and very venerable species. Three quarters of the species we plant provide habitat and food for bats. Our plantings along the Barron River will continue to support these beautiful creatures

Box trailer for hire, ring Garth on 4093 9926 Reminder – Nursery open	Mon/Thu 9-1pm, 10- noon Sat. ring nursery on 4093 8989 or by appointment 4093 8393
---	--

Sat. morning Plantings continue from 8am Meet at the nursery.
Email info@envirocare.org.au to receive a reminder email or call Sylvia on 4093 8393

Give a gift that keeps growing, through our local Grow Project.
www.envirocare.org.au info@envirocare.org.au

